



Company PROFILE

Shanti Road and Construction Private Limited
Nationally acclaimed contractor

The Company

We, at, M/S. SHANTI-ROAD AND CONSTRUCTION are a truly professional organization, engaged in the construction of roads, and highways, (operation and maintenance) for our esteemed clients Viz NHAI, MORTH, Various States Governments, etc, and PSUS. We adhere to strict Sops, and work ethics and are committed to delivering quality work well within the stipulated time.

SHANTI-ROAD AND CONSTRUCTION is an Engineering and Construction Company having its expertise in Roads, Highways, Railways, Metro Stations, industrial plants, and non-plant buildings in petroleum, hydrocarbon, and hazardous sector including Infrastructure as EPC Contract having PAN India presence.

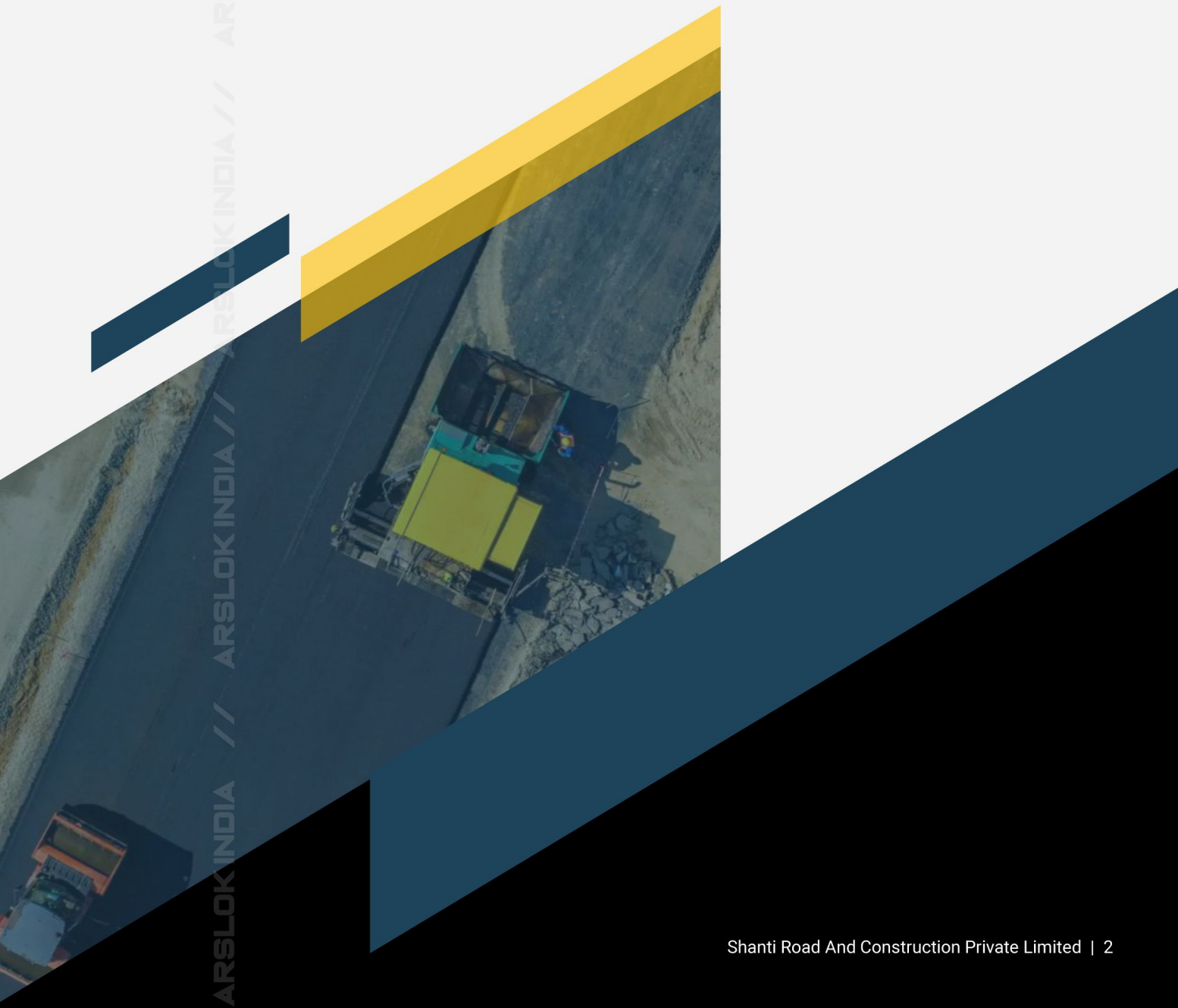
Ours is a team-driven company, with an array of young engineers who have an insatiable desire to create Engineering Marvels same is reflected by our execution of work. Some of our reputed clients in the different sectors are NHAI, MORTH etc.

Our Vision

Our aim is to deliver by exceeding client expectations, aiming for perfection, and setting for excellence offering outstanding customer service, increased flexibility, and greater value, thus optimizing system functionality and improving operation efficiency.

Our Mission

Our workforce is distinguished by their functional and technical expertise combined with their hands-on experience, thereby ensuring that our clients receive the most effective and professional service.



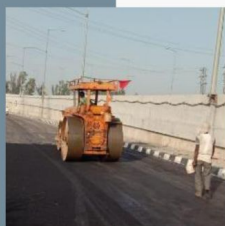
Our Expertise:



**ROADS AND HIGHWAYS
CONSTRUCTIONS**



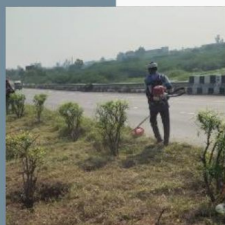
**MAJOR/MINOR BRIDGE
CONSTRUCTIONS**



VUP AND PUP CONSTRUCTIONS



**TOLL ROAD MAINTENANCE AND
INCIDENT MANAGEMENT.**



**HORTICULTURE, MEDIAN
PLANTATION REPLACEMENT AND
MAINTENANCE SERVICES.**



ARSLOKINDIA // ARSLOKINDIA // ARSLOKINDIA

Ongoing Projects



**83 Cr Project
2021**

Six laning of Shamlaji to Motachiloda from Km 401.200 to 494.410 (Length 93.210Km) [chainage 447 to 485] section of NH-8 in the state of Gujarat under NHDP Phase – V (Pkg – VI) on Hybrid Annuity Mode BALANCE WORK FROM CH KM. 447 TO CH KM 486.



**57 Cr Project
2021**

Balance work of 4-laning of Indore-Gujarat/MP Border from Km 106.210 to Km 115.250 (Start and End point of Bird Sanctuary), Km 121.740 to Km 127.140 (Machilya Ghat Section) and Forest Portion from Km 149.800 to Km 150.850, Km 158.250 to Km 158.850 of NH-47 (Old-59) on EPC Mode in the State of Madhya Pradesh



**4.78 Cr Project
2022**

Construction of Foot Over Bridge (FOB) at km 277+800, km 262+300, km 239+930 and km 8+900 on Punjab/Haryana Border-Jind Section of old NH-71 in the State of Haryana



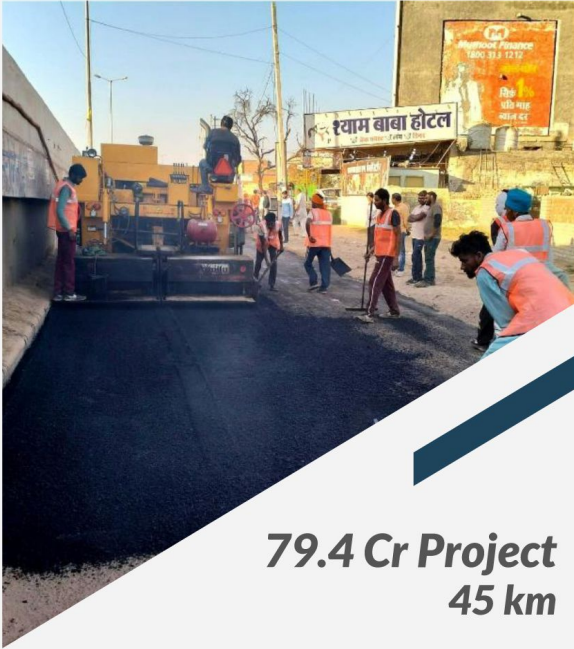
**1.19 Cr Project
2022**

Kaner Replacement in Four-laning of Rohtak - Hisar section of NH-9 (Old NH-10) from Km 170.000 including connection link from Km 87.000 (NH-10) to Km 348.000 (NH-71) in the State of Haryana.



ARSLOKINDIA // ARSLOKINDIA // ARSLOKINDIA

Maintenance Work



79.4 Cr Project
45 km

Four lane of Ambala - Kaithal section of NH-65 from Km.50.860 (Pehowa) to Km. 95.360 (Kaithal) in the state of Haryana under NHDP Phase-III on EPC basis (Pkg-2)



9.02 Cr Project
80.85 km

Operation & Maintenance including Incident Management of Rohtak – Panipat Section of NH-709 (Old NH-71A) from Km. 00.000 to Km 80.858 in the state of Haryana



7.96 Cr Project
144.66 km

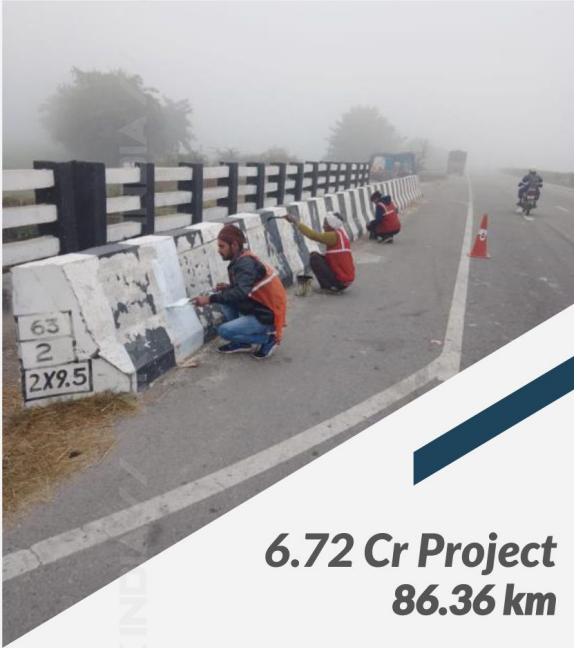
Routine maintenance and Incident management of four laning with paved shoulder of Hisar - Dabwali section of NH-10 from Km. 170.000 to Km. 227.000 (Package-I) and Km. 227.000 to Km. 314.000 (Package-II) in the state of Haryana



7.72 Cr Project
98.82 km

Routine maintenance and Incident management of four laning of Rohtak-Hisar section of NH-9 (Old NH-10) from Km. 87.000 to Km. 170.000 including connecting link from Km. 87.000 to Km. 348.000 (NH-71) in the state of Haryana

Maintenance Work



**6.72 Cr Project
86.36 km**

4/6 lane of UP/Haryana Border-Yamunanagar-Saha-Barwala-Panchkula Section NH-73 from km 70.830 to km. 157.192 in the state of Haryana on EPC mode (Pkg-1 and Pkg-2)



**1.26 Cr Project
35 km**

O&M works including incident management of Tallewal-Barnala Section of NH-71 (New NH-703) from km. 114.000 to km 136.070 including Barnala bypass (from km 136.070 of NH-71 to km 149.000)



Financial Capability

Our company turnover is around 25 cr in the financial year 2021-22, we have available bid capacity of 50 cr.



Our Plant and Machinery

Our Plant and Machinery



- 02 ● WMM PLANT
- 02 ● HOT MIX BATCH PLANT
with rep 160 tph
- 01 ● MOBILE HOT MIX PLANT
- 02 ● CONCRETE BATCHIN PLANT
- 25 ● TIPPERS
- 11 ● TRANSIT MIXURES
- 04 ● TANDEM ROLLER
- 04 ● GRADER
- 07 ● EXCAVATORS
- 04 ● SOIL COMPACTOR
- 04 ● PAVER (2)9MTRS (2)5.5 MTRS
- 04 ● SOIL COMPACTOR
- 02 ● PTR (Polly Tetra Road Roller)
- 02 ● MOBILE CONCRETE BATCHING PLANT
- 04 ● AIR COMPRESSOR AND BROOM


NUMBERS OF MACHINES

Our Plant and Machinery



- 01 ● MICRO SURFACING MACHINE
- 02 ● KERB MACHINE
- 04 ● KERB PAINTING MACHINE
- 02 ● BOOM PLACER
- 02 ● CONCRETE PUMP
- 06 ● BECKO LOADER
- 04 ● LOADER
- 10 ● HYDRA
- 02 ● FUEL DISPENSER PUMP
- 02 ● ROCK BREAKER
- 04 ● TRAILER 32 FEET LONG
(for shifting of plants & machinery)
- 02 ● GENERATORS (350 KVA, 250 KVA & 100 KVA)
- 15 ● TRACTOR WITH TANKER AND TROLLY

NUMBERS OF MACHINES



Manpower



16	SENIOR MANAGEMENT
12	SITE ENGINEERS
26	SUPERVISORS
06	STORE AND PURCHASE
80	SKILLED LABOURS
180	UNSKILLED
75	SEMISKILLED



CORPORATE OFFICE:

**SHANTI ROAD AND CONSTRUCTION
PRIVATE LIMITED**

📍 #E55, SECTOR 36,
SUNCITY, ROHTAK – 124001
(INDIA)

☎ +91-7027277779 +91-8607255556

✉ shantiroadconstruction@gmail.com